

PART OF THE SW. 1/4, OF SECTION 29, T.6N., R.2W., S.L.B. & M.

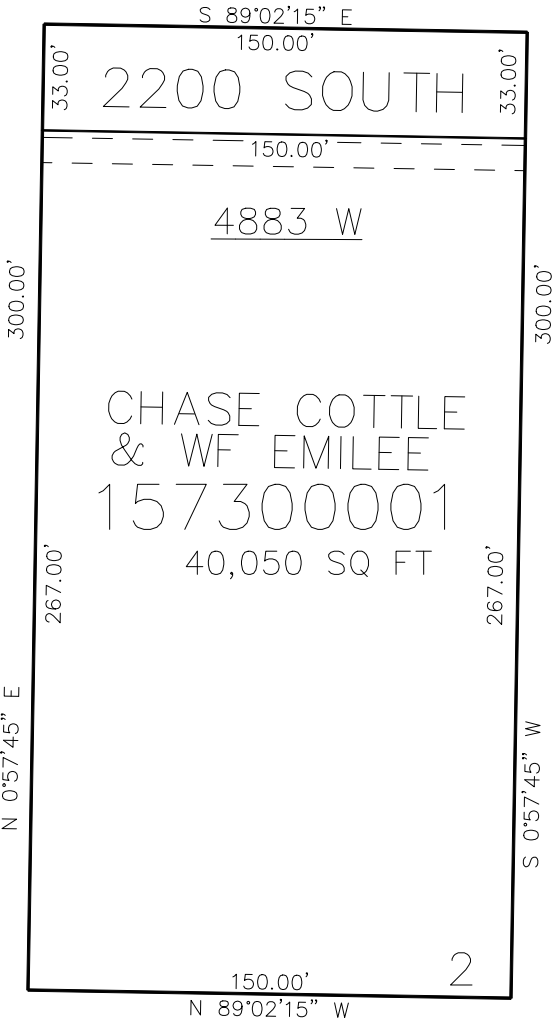
730

J&A GIBSON SUBDIVISION PHASE 2

IN WEBER COUNTY

SCALE 1" = 30'

TAXING UNIT: 514



SEE PAGE 79

SEE PAGE 79

10' UTILITY & DRAINAGE EASEMENTS EACH
SIDE OF PROPERTY LINES AS INDICATED
BY DASHED LINES EXCEPT AS OTHERWISE
SHOWN.

FOR COMPLETE ENC DATA SEE
ORIGINAL DEDICATION PLAT IN
BOOK 88, PAGE 49 OF RECORDS.